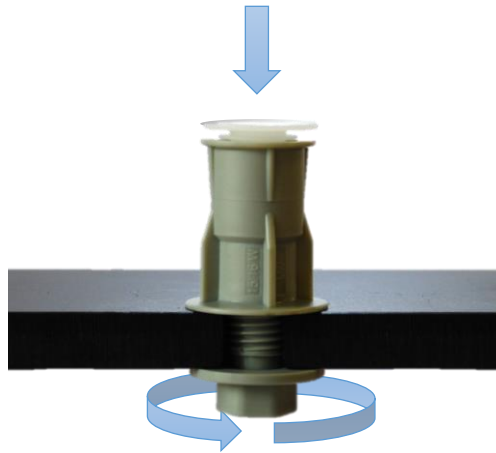


NOZZLE + SLEEVE G FOR CONCRETE FLOORS

1

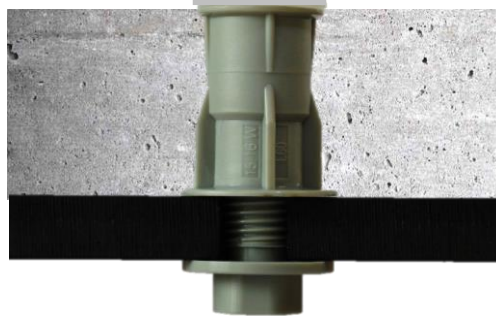
Fix the G sleeve on the mold with the PD bolt.
Place the UD protective cover into the sleeve.



*Check Nozzle distribution!
verify the correct spacing
between the sleeves*

2

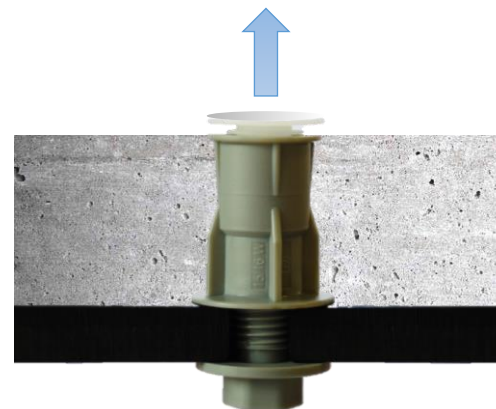
Make the concrete casting of
the floor when all the sleeves
are in place



*Check assembly strength!
The sleeve must be perfectly
fixed*

3

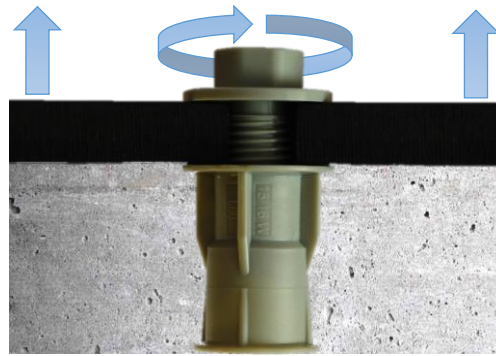
Remove the protective cover
UD from the sleeves



*Check the sleeves!
The internal side of the
sleeve must be clean
without concrete*

4

Turn upside down the mold, remove PD cap and the mold plate

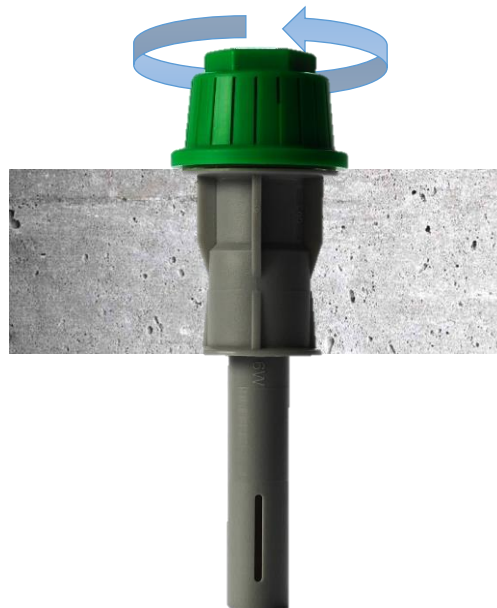


Check the sleeves!
All sleeves should be perfectly levelled in the whole floor

Before the filter start-up clean perfectly the floor under the nozzle's plate!
During backwash the turbulence of the water flow can move the powder, the sand and all the residual of the casting and collect them into the nozzles increasing the risk of clogging and damage.

5

Screw the Nozzle
Torque setting 5.0 Nm
Screwing speed less than 200 rpm



Check the Nozzle!
During the installation check the nozzles have not been damaged

Check the Nozzles!
All the Nozzles should be perfectly levelled in the whole floor.
If any level adjustment will be necessary you can use the OR rigid washers.

SUGGESTED DEVICES

CHTW TORQUE SCREWDRIVER
CHTC TORQUE SCREWDRIVER

