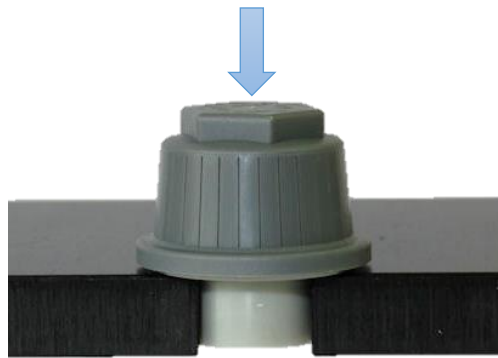


FILTER NOZZLE ON INTERMEDIATE PLATE



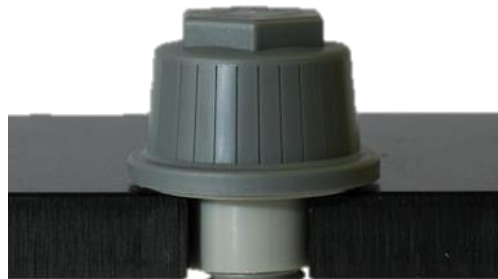
Insert the Nozzle into the hole from the top side of the plate and block it



Check holes in the plate!
Make sure the hole is min 32,0 mm diameter



Screw the Nozzle in the bottom side and keep the upper nozzle blocked

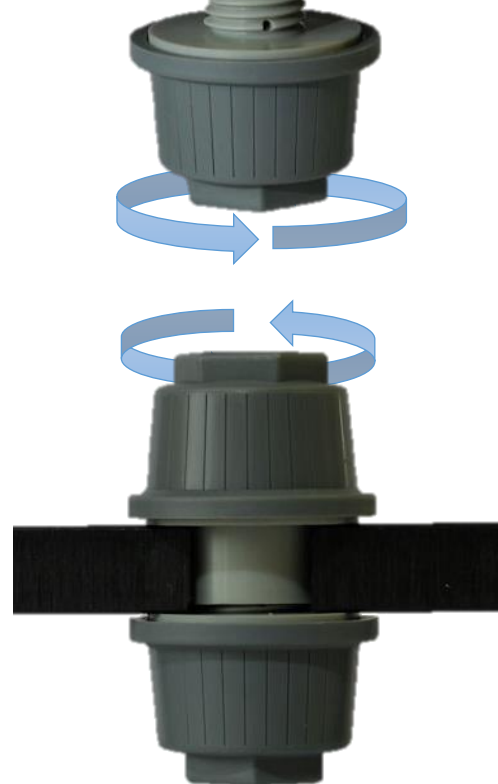


Check plate thickness!
Make sure the female thread is plate THK-2 mm



Screw the Nozzle in the top and keep the lower blocked

Torque setting 5.0 Nm
Screwing speed less than 400 rpm



Check the assembly!
The Nozzle will not have to move and have to join perfectly with the plate

SUGGESTED DEVICES

CHTW TORQUE SCREWDRIVER
CHTC TORQUE SCREWDRIVER

